

NOTICE

THIS GREAT BILLBOARD LOCATION MAY BE AVAILABLE SOON. LOCATED ON MAIN THOROUGHFARES NEAR OTHER COMMERCIAL BUSINESSES WITH HIGH TRAFFIC COUNTS AND GREAT VISIBILITY MAKE THIS A DYNAMIC LOCATION.

**LOCATION:
COLLINSVILLE, ILLINOIS**

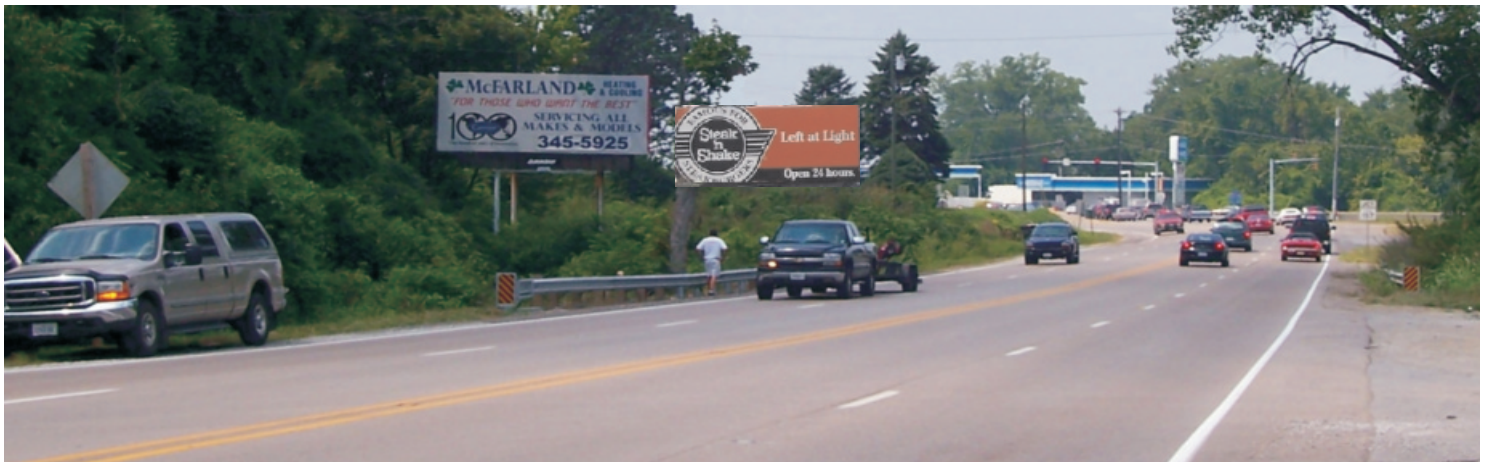
**BELTLINE
HWY 157 & HWY 159**

FACING EAST

**SIZE: 10' X 24'
ILLUMINATED**



CONTROL# CO10-3



FOR MORE INFORMATION CALL: 618 466-0818

VISIT OUR WEB SITE FOR LIST OF LOCATIONS
www.arrowsignsinc.com

**CUSTOM
Signs**
DESIGN FABRICATION
INSTALLATION



**Outdoor
Advertising**
BE SEEN!

**4545 N. ALBY ST.
PO BOX 163 GODFREY, IL 62035**